



# Speedfol Demo Trial

**Prepared by:**  
**Alim Caglayan**  
**Market Development Department**  
**Doktor Tarsa / Turkey**



- **Farmer Name** : **Can Demirler**
- **Plant** : **Plum**
- **Trial Area** : **0,2 ha**
- **Variety** : **Starley-Birton**
- **Plant Age** : **26 yers old**
- **Plant Density** : **400 trees/ha**
- **Water Source** : **Rain**

**The farmer has not applied any foliar fertilizer to his own plot.**

## DRT's Application of Foliar Fertilizer

May	June	July	August	September	October	November
-----	------	------	--------	-----------	---------	----------

Fertilizer	Dose l/ha	Dose kg/ha	kg/ha							
			N	P <sub>2</sub> O <sub>5</sub>	K <sub>2</sub> O	Zn	Mn	Cu	Fe	B
Speedfol Starter	8,0	11,8	1,3	1,4	1,6	0,0060	0,0025	0,0025	0,0059	0,0012
Speedfol Flower&Fruit	12,0	17,8	1,6	1,2	3,2	0,0091	0,0037	0,0037	0,0089	0,0018
<b>TOTAL</b>	<b>20,0</b>	<b>29,6</b>	<b>2,89</b>	<b>2,64</b>	<b>4,78</b>	0,0151	0,0062	0,0062	0,0148	0,0030

**N-P<sub>2</sub>O<sub>5</sub>-K<sub>2</sub>O**

**1,0    0,9    1,7**

Speedfol Starter has been applied two times in May and June (200 cc / 100 liters each)

Speedfol Fruit has been applied three times in June and July (200 cc / 100 liters each)



June



F  
A  
R  
M  
E  
R

D  
R  
T  
-  
S  
p  
e  
e  
d  
f  
o  
l





August



F  
A  
R  
M  
E  
R

D  
R  
T  
-  
S  
p  
e  
e  
d  
f  
o  
l





August



F  
A  
R  
M  
E  
R

D  
R  
T



## August

Weight of 20 Fruits 0,320 gr.

Weight of 20 Fruits 0,465 gr.

Difference 0,145gr  
% 68

F  
A  
R  
M  
E  
R



Randomly  
Chosen



D  
R  
T  
-  
S  
p  
e  
e  
d  
f  
o  
l

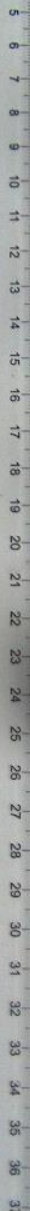


D  
R  
T  
-  
S  
p  
e  
e  
d  
f  
o  
l



DRT-Speedfol

RUBENIS  
6250



FARMER

F  
A  
R  
M  
E  
R

## Cost & Benefit

	Unit	Farmer	DRT	Difference
<b>Foliar Fertilizer Cost</b>	<b>USD/ha</b>	<b>0,00</b>	<b>384,62</b>	<b>384,62</b>

<b>Yield</b>	<b>MT/ha</b>	<b>36,0</b>	<b>52,0</b>	<b>16,0</b>
<b>Price</b>	<b>USD/MT</b>	<b>384,62</b>	<b>384,62</b>	<b>0,00</b>
<b>Gross Income</b>	<b>USD/ha</b>	<b>13.846,15</b>	<b>20.000,00</b>	<b>6.153,85</b>

<b>Net Income</b>	<b>USD/ha</b>	<b>13.846,15</b>	<b>19.615,38</b>	<b>5.769,23</b>
-------------------	---------------	------------------	------------------	-----------------

<b>Increase in Income</b>	<b>42%</b>
---------------------------	------------

<b>Increase in Yield</b>	<b>44%</b>
--------------------------	------------

1 USD: 1,3 YTL





- More yield
- Better quality
- Better colour
- More shoots
- Longer shelf life
- Happy farmer